

Human SLAMF7/CRACC/CD319 Protein

Cat. No. SMF-HM407

Description

Source	Recombinant Human SLAMF7/CRACC/CD319 Protein is expressed from HEK293 with His tag and Avi tag at the C-Terminus. It contains Ser23-Met226.
Accession	Q9NQ25-1
Molecular Weight	The protein has a predicted MW of 25.3 kDa. Due to glycosylation, the protein migrates to 40-55 kDa based on Tris-Bis PAGE result.
Endotoxin	Less than 1EU per µg by the LAL method.
Purity	> 95% as determined by Tris-Bis PAGE > 95% as determined by HPLC

Formulation and Storage

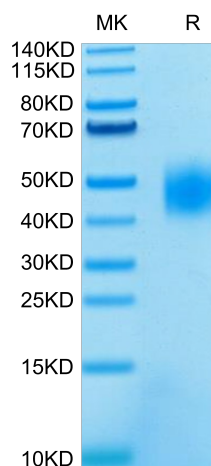
Formulation	Lyophilized from 0.22µm filtered solution in PBS (pH 7.4). Normally 8% trehalose is added as protectant before lyophilization.
Reconstitution	Centrifuge the tube before opening. Reconstituting to a concentration more than 100 µg/ml is recommended. Dissolve the lyophilized protein in distilled water.
Storage	-20 to -80°C for 12 months as supplied from date of receipt. -20 to -80°C for 3-6 months in unopened state after reconstitution. 2-8°C for 2-7 days after reconstitution. Recommend to aliquot the protein into smaller quantities for optimal storage. Please minimize freeze-thaw cycles.

Background

CD2-like receptor activating cytotoxic cells (CRACC), also known as CS1, novel Ly9, SLAMF7, and CD319, is a 65-75 kDa type I transmembrane glycoprotein in the SLAM subgroup of the CD2 family. Self-ligand receptor of the signaling lymphocytic activation molecule (SLAM) family. SLAM receptors triggered by homo- or heterotypic cell-cell interactions are modulating the activation and differentiation of a wide variety of immune cells and thus are involved in the regulation and interconnection of both innate and adaptive immune response.

Assay Data

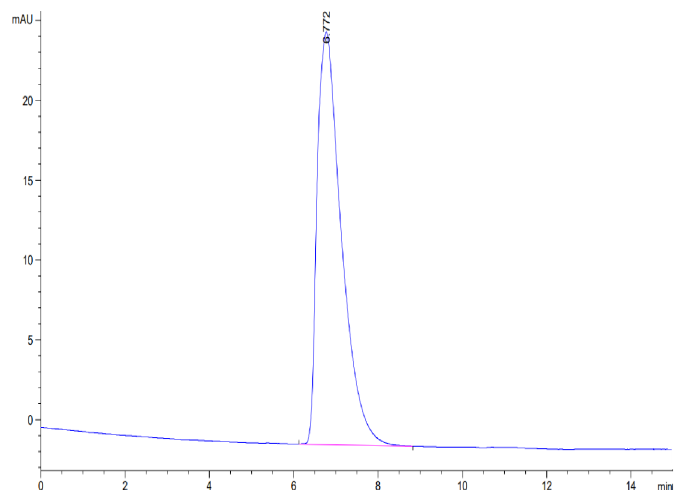
Tris-Bis PAGE



Human SLAMF7 on Tris-Bis PAGE under reduced condition. The purity is greater than 95%.

SEC-HPLC

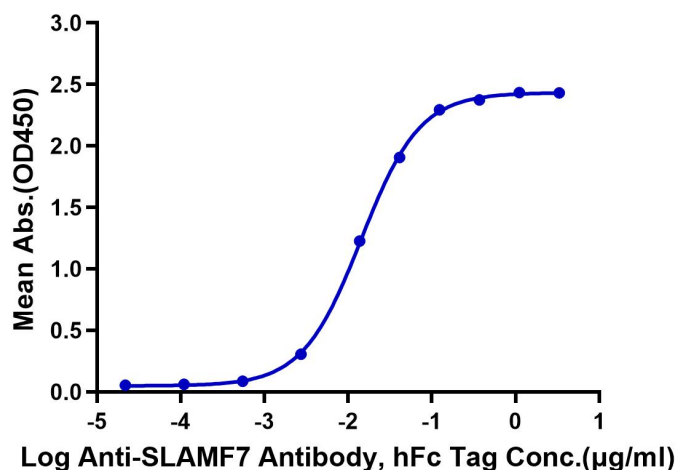
Assay Data



The purity of Human SLAMF7 is greater than 95% as determined by SEC-HPLC.

ELISA Data

Human SLAMF7, His Tag ELISA
0.1µg Human SLAMF7, His Tag Per Well



Immobilized Human SLAMF7, His Tag at 1µg/ml (100µl/well) on the plate. Dose response curve for Anti-SLAMF7 Antibody, hFc Tag with the EC50 of 14.3ng/ml determined by ELISA.